

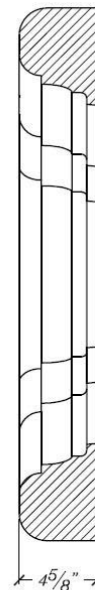
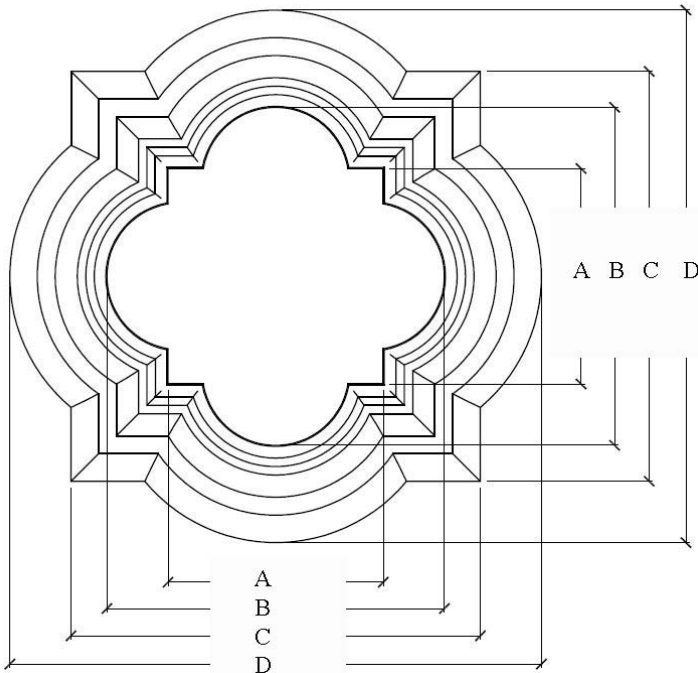
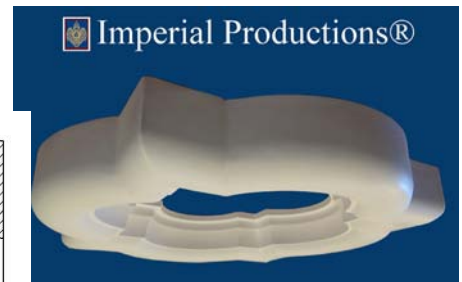


# Quatrefoil Frame IPQD101 ArchPolymer™



31-1/2" (80cm)  
x 31-1/2" (80cm)  
Projection 4-5/8" (11.75cm)

Materials:  
Primed ArchPolymer™  
Optional Factory Painted  
GRG-NeoPlaster™  
GFRC-Zeament™



A=12-3/4"    B= 20"  
C= 24-1/4"    D= 31-1/2"



\* All specifications subject to change without notice,  
Final products & Measurements may vary from this brochure Manufacturing tolerences +/- 1/8" (.31cm)



**Imperial Productions®** 1-800-399-7585  
Imperial Productions & Distribution Inc Toronto / New York / Chicago  
email sales@imperialproductions.com copyright 2016 MRDCI All Rights Reserved

MAY-24